



WSC GuardSM

I n s t a l l a t i o n G u i d e

Congratulations on your decision to use WSC Guard for secure wireless networking.

The basic steps to install WSC Guard are:

- Set up your wireless hardware
- Check that your computer system meets minimum requirements
- Download and install the WSC Guard software from the WSC web site
- Secure the wireless Network and access point
- Add Members to the secure wireless Network
- Set up the connection to the secure wireless Network
- Login with your User Name and password


Before You Begin

You may want to have the following on hand before you begin:

- 1** An Ethernet cable to connect to your computer and router.
- 2** The email addresses of each person who will be part of your secure wireless Network.
- 3** A User Name for each person who will be part of your Network.
- 4** If you are installing on a Windows 98 computer, the Windows 98 CD.


Prepare to Install

- 1 Set up your wireless access point according to its manufacturer's instructions.

 *Tip:* Some wireless access points will work right out of the box, but others will require more advanced configuration. Be sure to follow the manufacturer's instructions to set up and configure your wireless access point. You should also go to the manufacturer's web site to see if any firmware updates are available for your access point.



- 2 Make sure the wireless network adapter in your computer is installed and enabled.

 *Tip:* If you received a CD for your wireless network adapter's driver program, an update may be available from the manufacturer's web site. Make sure the driver is up-to-date to take advantage of the latest security features and updates. WSC Guard requires the updated drivers to enable the strongest possible security. You can also go to www.wirelesssecuritycorp.com for additional information and descriptions of several popular wireless network adapters, including the drivers they need.

- 3 Using Ethernet cables, connect your computer and access point to a Network that has internet access.

For example, your access point may have an extra Ethernet port just for this purpose, or if you're using a hub, switch, or router, plug into it.



With your computer and access point connected to the Network with internet access, the WSC Guard installation process will also be able to check and verify that your hardware and software meets the minimum system requirements.

If you're certain that your wireless hardware and computer meet the minimum system requirements, skip to page 4 of this Installation Guide.

- 4 Connect to the WSC web site at www.wirelesssecuritycorp.com.

- 5 Click the **Download** button to get the 30-day free trial.

The Downloads Page appears and you're now ready to begin checking your wireless system for compatibility with WSC Guard.



Check the System Requirements

These three links walk you through the installation. Step 1 is already selected for you.

1 Scroll down to see the list of access points and Wireless Cards compatible with WSC Guard.

2 To see specific combinations of hardware, choose from these two drop-down menus.

To see the general requirements list of what the computer needs, scroll to the bottom of the page.

Note: Your access point *must* contain the proper firmware revision levels, as shown in this list. Use the links in the list to obtain a firmware upgrade.

3 Click this link to test your computer and wireless components for compatibility with WSC Guard.

[Test your system for compatibility with WSC Guard](#)

4 On the next page click **Begin System Requirement Check**, and then on the next page click **Start**.

The automated system requirements test shows that your computer meets all the requirements to install and run WSC Guard.

The next step is to download the software.

Test	Value	Status	Comments
Operating System	Windows XP Service Pack 1	✓	Compatible
RAM	512 MB	✓	Meets or exceeds minimum required
Disk Space	C Drive, 3568 MB	✓	Meets or exceeds minimum required
Web Browser	Internet Explorer 6.0	✓	Meets or exceeds minimum required
Network Adapter	Linksys WPC54G; Driver 3.20.21.0	✓	Compatible
Access Point	WRT54G; Firmware v1.42.3	✓	Compatible

System Requirement Check Result Details:

Congratulations! This system is compatible with WSC Guard.

Your next step is to download the WSC Guard product from [here](#) and give it a try.

Download the Software

- 1 Click **Step 2** to go to the Downloads page.



- 2 Download the software first, and then the user guides.

Support

- Customer Service
- **Technical Support**
- Downloads
- WSC Guard System Requirements
- Guest Access
- Frequently Asked Questions
- Glossary

WSC Guard

- Download Free 30 Day Trial

Downloads

Installation

[Windows XP / 2000 / ME / 98 WSC Guard Installer](#) <=== Download First

Note: To install the WSC Guard client, click on the link above and open the file to run the installer.

[Windows XP Guest Client Configuration Wizard](#)

Note: To run the Guest Client Configuration Wizard, click on the link above and open the file.

Documentation

[Installation Guide \[PDF\]](#) <=== Download Second

[User Guide \[PDF\]](#)

Adobe Get Adobe Reader

Later, when you're assigning Guests to use your Network, you can return to this page and download the special Wizard program, **Windows XP Guest Client Configuration Wizard**.

- 3 Save the WSC Guard software and *WSC Guard User Guide* on any local hard drive.

- 4 Now click **Step 3** and read the instructions for installing the WSC Guard software.



That's all it takes.

You're now ready to install WSC Guard software and begin setting up security for your wireless Network.

Install the Software

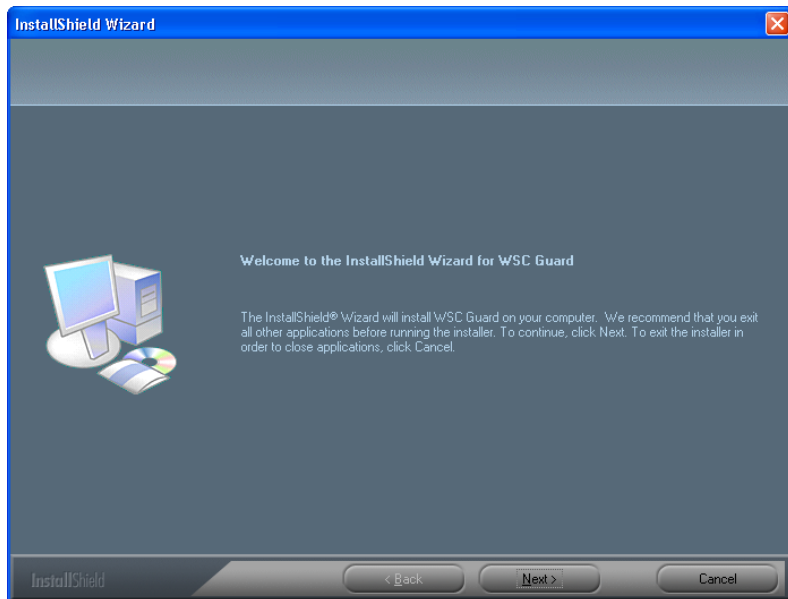
- 1 If any applications are running on your computer, including your internet browser, exit them now.
- 2 Find the WSC Guard *Setup.exe* file you just downloaded and saved and double-click its icon.

Installation begins and, after a few moments, the first window of the process appears.



Note: Installing on a Windows 98 computer may require inserting the Windows 98 CD to complete the installation. Also, a message may ask if you want to replace a newer file with an older version. Choose the option to keep the newer version.

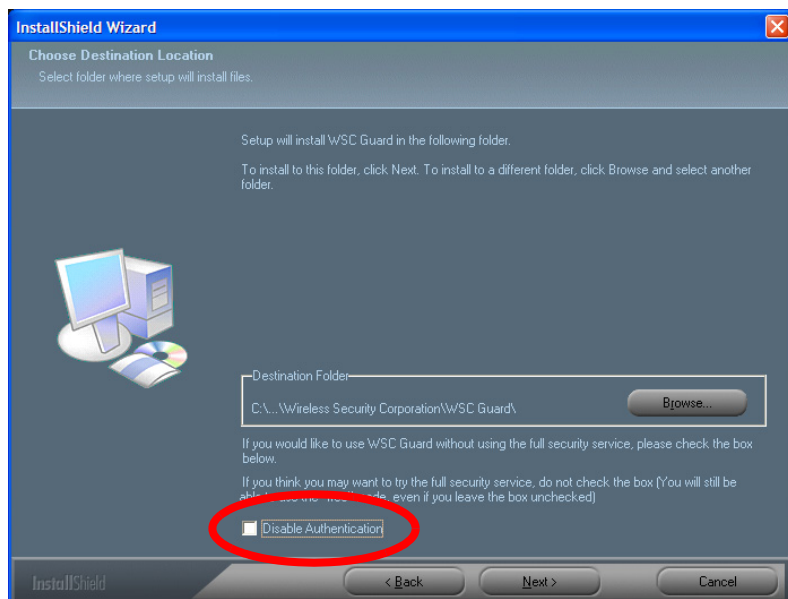
- 3 Click **Next** and follow the instructions on the windows.



When you see this Installation window, notice the option labeled **Disable Authentication**.

This is an option for getting some free software from WSC, without registering for a wireless security subscription.

If you select the option, you're welcome to use the WSC Guard software at no charge for as long as you want. However, your wireless Network will *not* be secured by the WSC Guard service until you register later on.



The free software is our **Network Selector**, which provides features that make it easier to configure, select, and manage your wireless Networks. Specifically designed for older Windows operating systems, such as Windows 98 and 2000 which do not have built-in wireless networking support, it can also be used with Windows XP to make several often-confusing wireless networking tasks much easier to perform. The Network Selector also adds WPA support to Windows 98 and 2000 computers so they can now use WPA network adapters. The *WSC Guard User Guide* (also free) explains how to use the **Network Selector**.

- 4 If you **do** want WSC Guard security now, leave the option unchecked, and click **Next**.
- 5 When installation is finished, follow the directions on the window and reboot your computer.

After your computer restarts, this WSC Guard Welcome window appears.

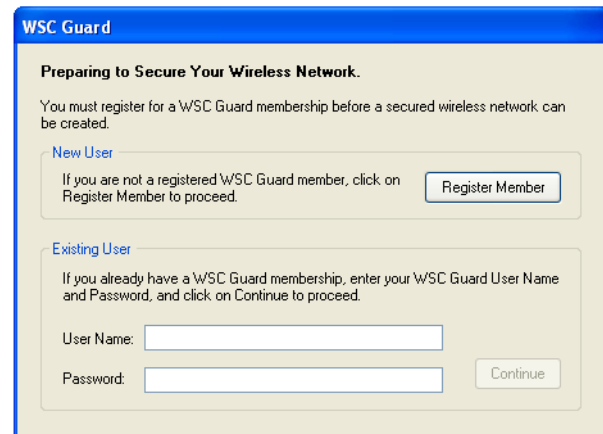
Note: If your Network is not a WPA Network, a message tells you that you have to connect to a Network, and explains how to do it.

6 On this Welcome window, select **Secure My Wireless Network**.



7 If you are installing WSC Guard for the first time, click **Register Member**.

You will then be able to register with WSC Guard's secure Authentication Center.

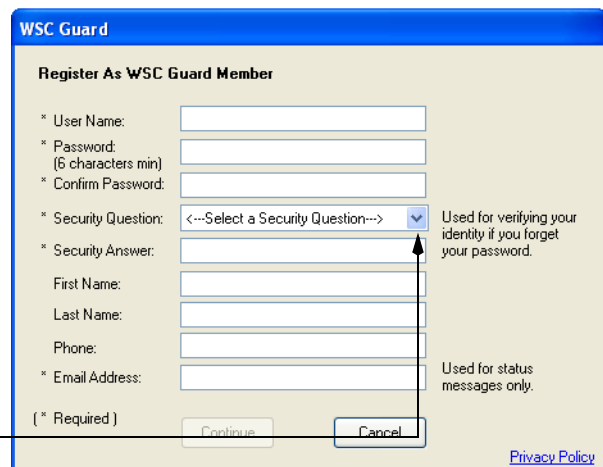


8 Type your information in the boxes.

The User Name and password are used to authenticate you on the wireless Network.

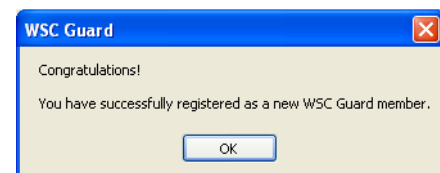
Make sure your User Name is one you like. It remains the same for the duration of your WSC membership.

9 Click the down arrow to see a preset list of security questions, and select one to use in case you forget your password.



Your valid email address is very important because it uniquely identifies you in the WSC Authentication Center.

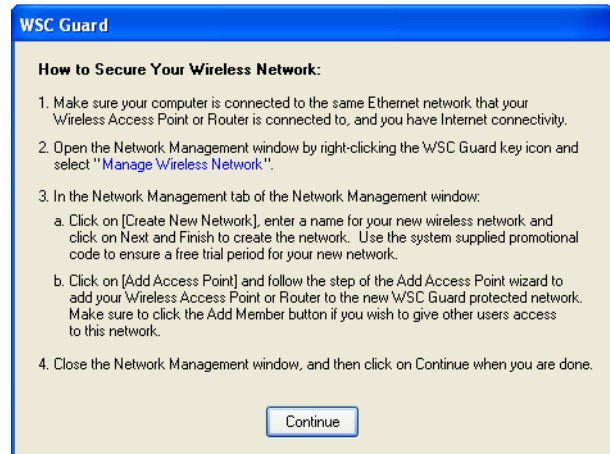
10 When all the required information is filled in, click **Continue**. You'll see a confirmation message about your WSC Guard registration. *Congratulations!*



11 Click **OK**. You'll now set up the Network and access point.

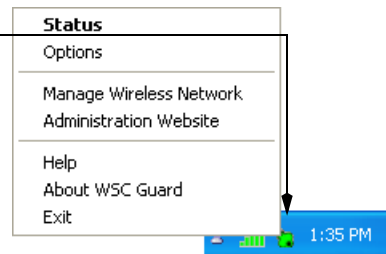
Set Up the Network and Access Point

This Instruction window appears. It provides an overview of the next few steps, described below, to set up your Network and access point. The window will stay open until you finish the process.

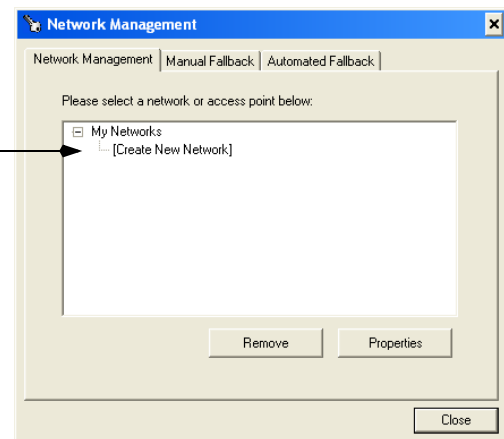


1 Right-click on the WSC Guard Notification Icon (the green key) in the lower right corner of your computer screen.

2 Choose **Manage Wireless Network** from the Pop-up menu.



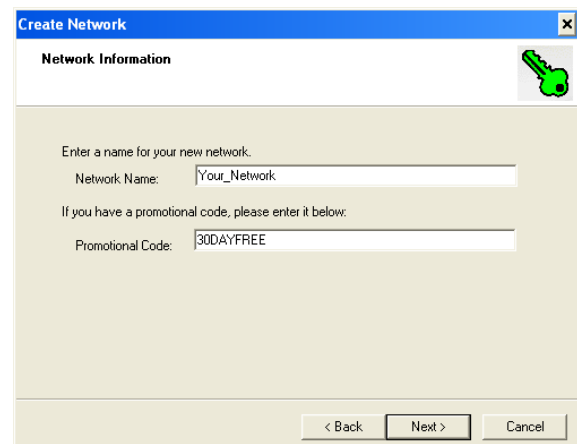
3 Click **[Create New Network]**.



4 Type a name for your new wireless Network.

Give it a descriptive name so the people using it will know which Network it is, for example, Sales_Department_Net or West_Wing_Bldg_2.

5 Click **Next**.

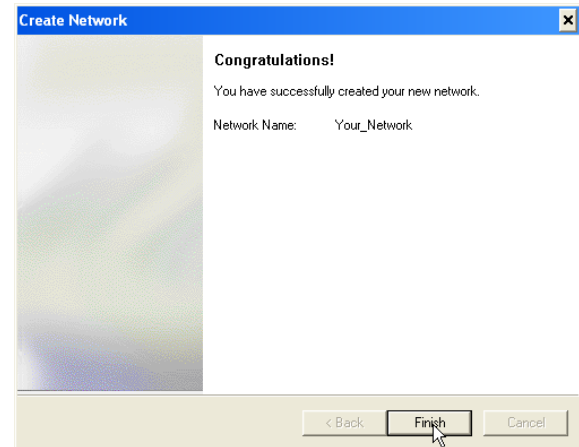


Your Network has a name and, because you are the person who set it up, you are now the **Network Administrator**.

You have the authority to add access points to the Network, add Network Users and Guests, control the duration that people may remain as Users and Guests, and so forth. See the *WSC Guard User Guide* for more about managing your Network.

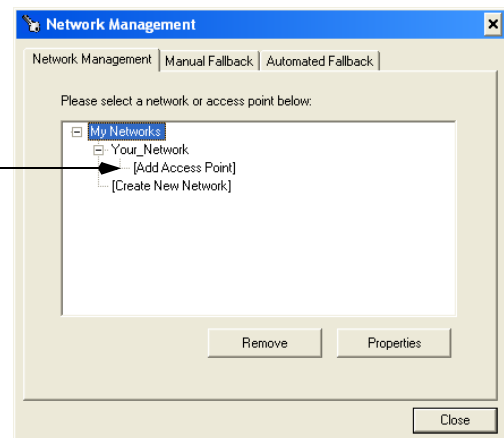
The Network is now ready to have its access point set up.

6 Click Finish.



7 Now click [Add Access Point].

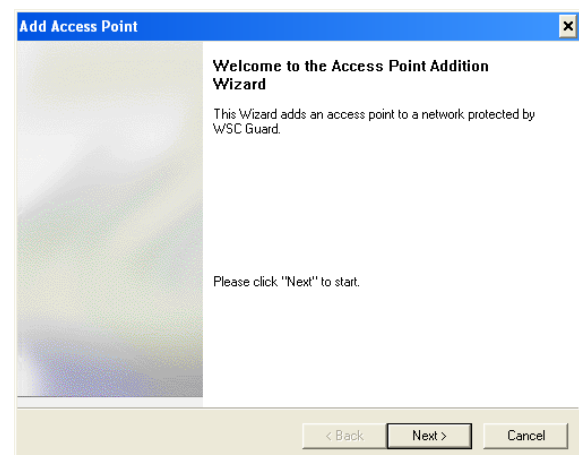
If you have more than one Network listed, select it first, then click [Add Access Point].



The Access Point Wizard appears. It will walk you through the steps to set up your access point for the new Network.

8 Click Next.

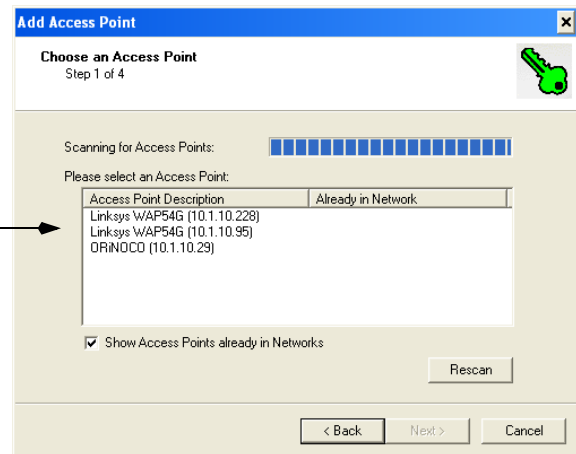
The Access Point Wizard begins scanning to find access point(s) on your Network.



The Access Point Wizard lists the available access points.

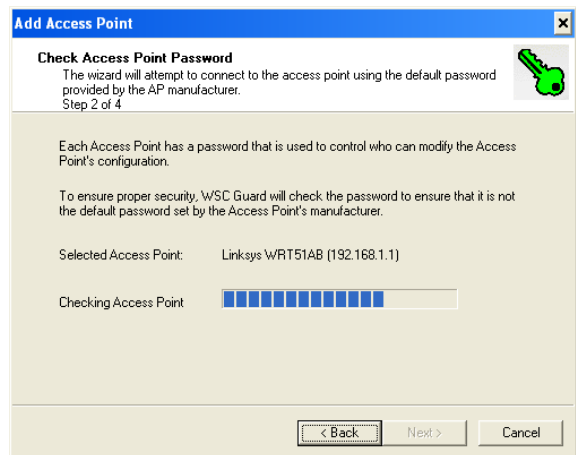
9 From the list, select the access point to use for your new WSC Network.

10 Click **Next**.



The Access Point Wizard now tries to log onto the access point, using the default password supplied by the manufacturer.

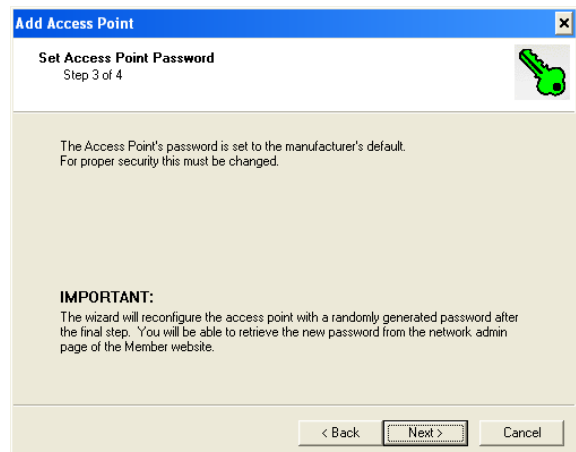
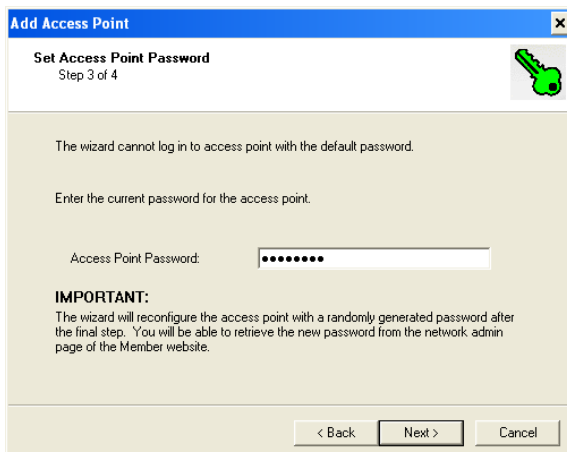
11 Click **Next**.



The next window that appears depends on the password currently assigned to the access point.

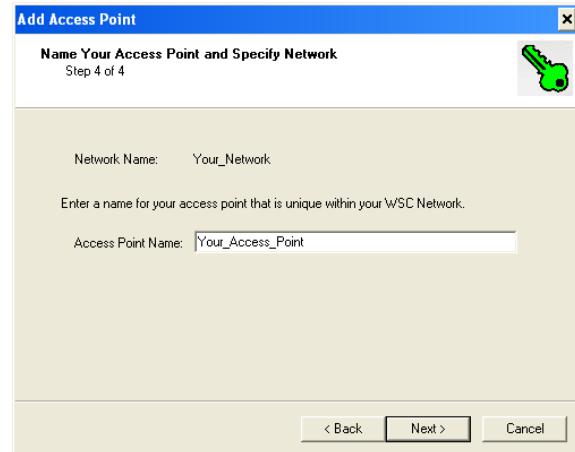
If you assigned a password to the access point when initially configuring it with the manufacturer's utility program, this window appears. Enter that password and click **Next**.

If you have not changed the password yet, and it is still the manufacturer's default, this window appears. Click **Next**.



12 Now type a name for the access point and click **Next**.

As with the Network name, give the access point a descriptive name so people know which one it is.

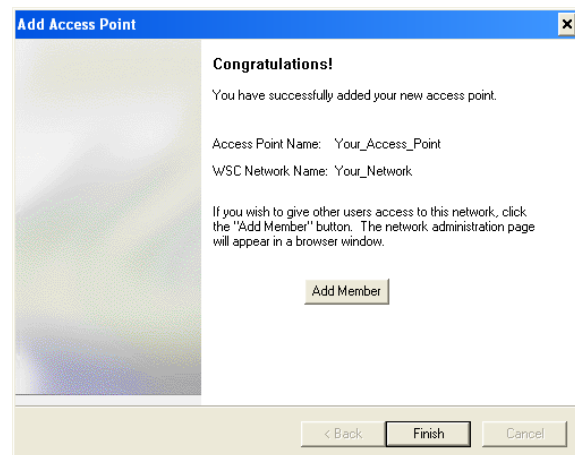


Congratulations. Your Network and access point are set up and ready to go.

13 If you now want to add Members to your Network, click **Add Member**.

Adding Members to the Network takes a few minutes, so if you're in a hurry and want to do it later, click **Finish**, then skip to "Complete the Setup" on page 13 of this Installation Guide.

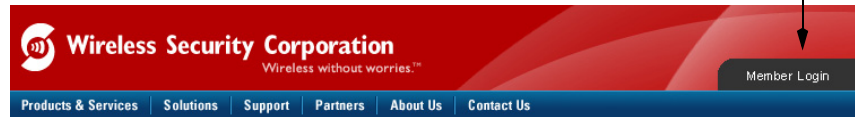
If you clicked the **Add Member** button, you'll go to the WSC Member's web site which has the pages for adding new Members.



Note: Later on, when you want to add Members to your Network, right-click the WSC Notification Icon (the green "key") at the bottom right on the computer screen and choose **Administration Website** from the Pop-up menu. You can then follow the same steps detailed on the next few pages of this Installation Guide, or see the *WSC Guard User Guide*. The *WSC Guard User Guide* also includes additional information about the status of Network Members and their registration.

Add Members to Your Network

- 1 Get the email addresses of all WSC Guard Members who will be using your Network.
- 2 On the Home page of the WSC web site, click the Member Login tab.

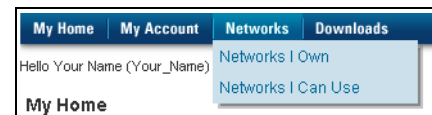


- 3 Enter your User Name and Password on the WSC web site login page and click **Login**.

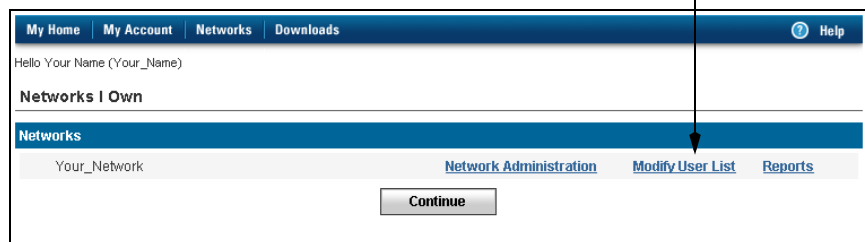
You will see your personal WSC web page.

The image shows the "Secure Wireless Member Login" page. It includes a navigation bar with links: Products & Services, Solutions, Support, Partners, About Us, and Contact Us. The login form has fields for "User Name:" (containing "Your_Name") and "Password:" (masked with dots). Below the fields is a "Login" button. There are also links for "Forgot your password? Click here.", "System Requirements", "Product Downloads and Documentation", and "FAQs".

- 4 Click the Networks tab and choose **Networks I Own** from the drop-down menu.



- 5 On your Networks I Own page, click **Modify User List**.



You will see the Add Network Users page which shows the current Network Members. If this is the first time you've added Users, your name is the only one on the list because you are the Network Administrator.

- 6 Click the **Add Member** button.

The image shows the "Add Network Users" page. It has a navigation bar with links: My Home, My Account, Networks, and Downloads. Below the navigation bar, it says "Hello Your Name (Your_Name)". The "Add Network Users" section has a "Maximum Network Size: 1 [Edit]" label. There are two buttons: "Add Member" and "Add Guest". Below these buttons is a table for "Members (+)". The table has columns: Full Name, User Name, Access Beginning, Duration, Status, and Last Accessed. There is one row for "Your Name" with the following values: Your_Name, 02/09/05 16:52 PST, 10 Year, Active, and Never. There are links for "Modify" and "Remove" next to the row. Below the table is a section for "Guests (+)" with a message: "There are no Guests associated with this network."

7 Enter each new Member's email address and select the access duration—the length of time that Member can access the Network.

8 To give a Member authority to put the Network into “Fallback Mode” in case security is lost, click the box for **Can Initiate Network Fallback**.

Email Address	Access Duration	Can Initiate Network Fallback
<input type="text"/>	10 Year	<input type="checkbox"/>
<input type="text"/>	10 Year	<input type="checkbox"/>
<input type="text"/>	10 Year	<input type="checkbox"/>
<input type="text"/>	10 Year	<input type="checkbox"/>
<input type="text"/>	10 Year	<input type="checkbox"/>

Normally, Fallback Mode authority is limited to the Network Administrator and anyone acting as a Network Administrator, however you can assign the permission to any Network Members. See the *WSC Guard User Guide* for more information about Fallback Mode.

9 Click **Submit**. Repeat if you want to add more Members to the Network.

If the new Users are not already registered as WSC Members, this screen appears so you can register them.

10 Enter the email address, supply a User Name, and a password for each new, un-registered Member.

Email Address	User Name	Password (6 Characters Minimum)
<input type="text"/>	<input type="text"/>	<input type="text"/>
<input type="text"/>	<input type="text"/>	<input type="text"/>
<input type="text"/>	<input type="text"/>	<input type="text"/>

11 Click **Continue**.

This Confirmation page now appears so you can check the information.

Email	Username	Password
<input type="text"/>	<input type="text"/>	<input type="text"/>
<input type="text"/>	<input type="text"/>	<input type="text"/>
<input type="text"/>	<input type="text"/>	<input type="text"/>

12 Click **Submit**.

- 13A Receipt page appears that shows the effect of the new Members on the overall cost of the Network. The receipt will also be emailed to you. Click **Continue** on the receipt page.

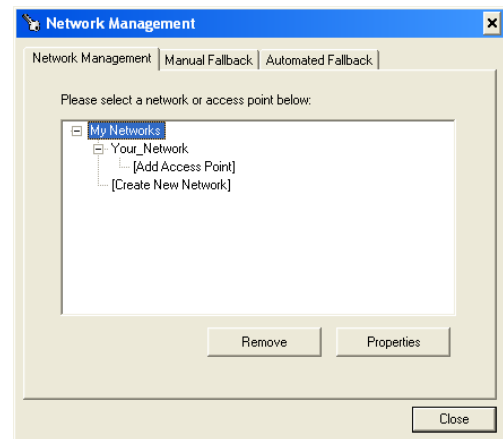
The Add Network Users page now reappears with your updated list of Network Members. This completes the steps to Add Users.

- 14 Click the Member Logout tab to logout of your WSC Guard Home page.

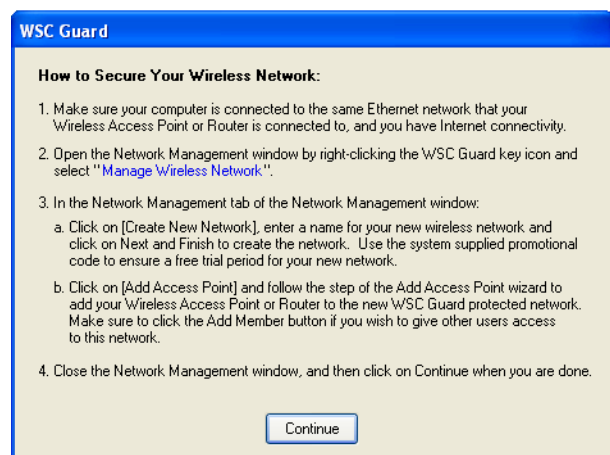


Complete the Setup

- 1 Click **Close** on the Network Management dialog box.



- 2 Click **Continue** on the Instruction window.



You will see this Welcome to WSC Guard window.

3 Click Continue.



You're now ready to connect to your new wireless Network.

4 Don't click Continue yet. Leave this window open while you follow the instructions on it.



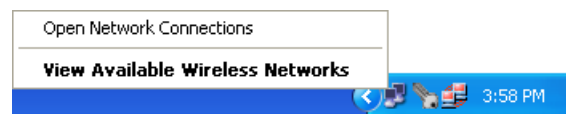
Connect to the Network

Remove the Ethernet cable from your computer and now use your wireless access point to connect to the internet.

The steps to connect a Windows XP computer and a Windows 2000/98/Me computer are slightly different. Please follow the correct set of steps below.

FOR WINDOWS XP, USE THE FOLLOWING STEPS:

1 From the Windows XP Taskbar, right-click on the Windows network connection icon and choose **View Available Wireless Networks**.

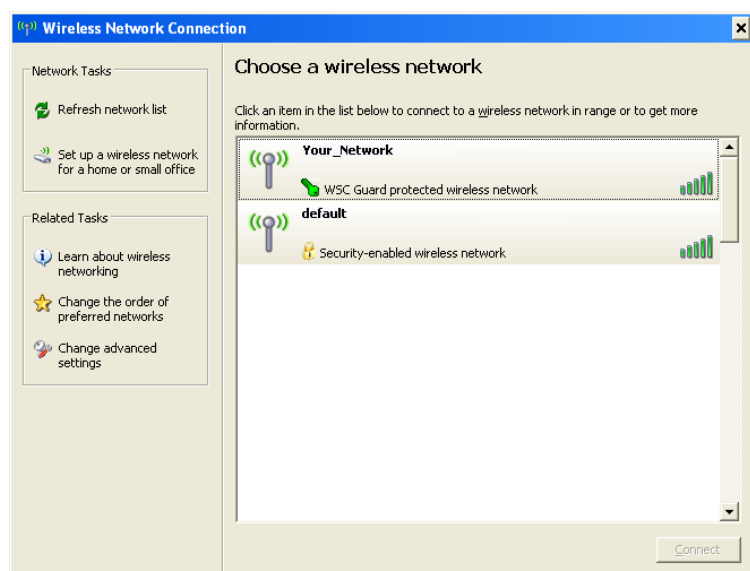


2 In the Wireless Network Connections window, select your new Network.

Note: If the Network is not listed, click **Refresh Network List**.

Note: Some wireless network adapters use their own utility for connecting to a wireless Network. In that case, you will see a different window than this one. If you are unsure about what to do, you can use the steps below for a Windows 2000/98/Me connection.

3 Click Connect.

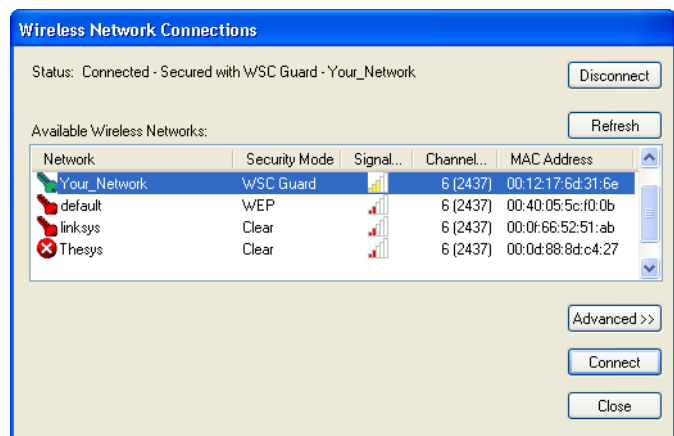


FOR WINDOWS 2000/98/ME, USE THE FOLLOWING STEPS:

- 1 Right-click the WSC Notification icon and choose **View Available Wireless Networks** from the Pop-up menu.



The WSC Guard Network Selector appears. This is the free software that provides features that make it easier to configure, select, and manage your wireless Networks.



- 2 Select your new Network from the list and click **Connect**.

The WSC Guard login window appears and you are ready to login.

Log into the Network

After you complete the steps to connect to the wireless Network, the WSC Guard Login window automatically pops up.

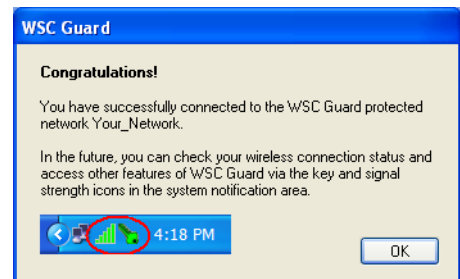
- 1 Enter your User Name and Password and click **Login**.

The WSC Notification Icon (the “key”) in the Windows Taskbar blinks while login is proceeding and then turns green indicating a successful login.



A message congratulates you for successfully completing the setup of your wireless Network.

- 2 Click OK. From now on, the login dialog box will appear when you boot your computer so you can login right away.



Now let the Network Users know they are now part of the Network and need to download the WSC Guard software from the WSC web site at www.wirelesssecuritycorp.com. Give the Users their User Names and passwords that you established for them. After installing the WSC Guard software, Users can log in with the User Name and password. You should also have Users change their passwords. See the *WSC Guard User Guide* for the steps to change passwords and other networking tasks.

WHAT HAPPENS AT THE END OF THE FREE TRIAL?

You receive email when your free trial has expired. You then need to update your billing profile.

- 1 Choose **ADMINISTRATION WEBSITE** from the Pop-up menu.
 - 2 Click Member Login and enter your User Name and Password and click **LOGIN**.
 - 3 Click the My Account tab, choose Billing Profile, and enter your billing information.
- If you have questions, see the *WSC Guard User Guide*.